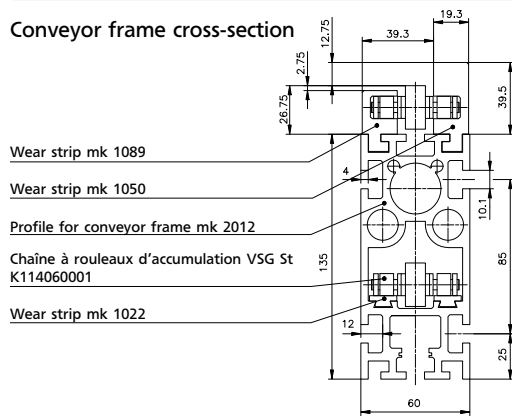


Chain Conveyors SRF-P 2012



Conveyor frame cross-section





Accumulating roller chain conveyor SRF-P 2012 is designed for the transport and accumulation of loads up to 1000 kg (2200 lbs). As pallets travel on the large idler rollers, the conveyor is very quiet even at accumulation zones. The

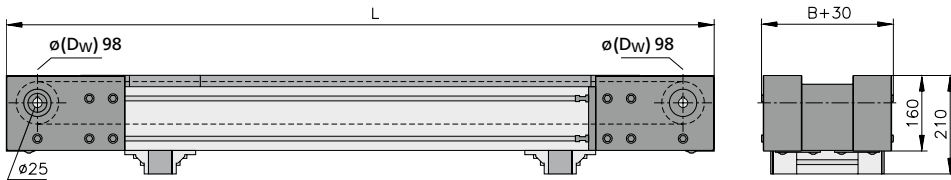
force required to hold accumulating pallets is minimal. Typical applications include product transfer between workstations or accumulation of products between processes. Entire handling systems can be designed using

this conveyor system. T-slots are accessible on three sides on the profile frame for the attachment of stands, side rails, sensors and stops (10 mm opening). mk offers a low-maintenance design for extending service intervals.

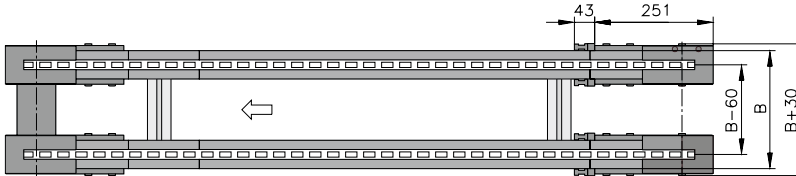
SRF-P 2012 AA

Accumulating roller chain conveyor with head drive without motor

B20.12.008



Wear strip options see page 199



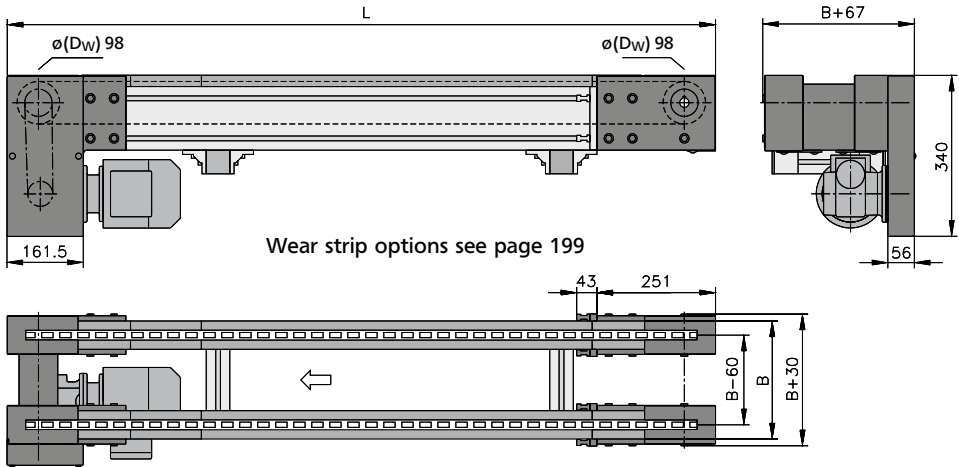
The AA drive variant, offers the advantage of operating multiple conveyor strands in parallel or in series with one drive. Depending on the requirement, the conveyor is designed either with a hollow shaft or with a connecting shaft with shaft journal ($\varnothing 20/25$ mm, usable length 40 mm, incl. feather key DIN 6885).

	Dimensions – technical information	Notes
Conveyor length L	between 1000-10000 mm	any increment possible depending on chain pitch
Conveyor width B	200 to 2000 mm	
Chain	accumulating roller chain 3/4" with plastic or steel roller	see from page 202
Drive and speed	to 30 m/min (100 ft/min)	see chart on page 12
Stands and side rails		see from page 262
Load capacity	total load to 1000 kg (2200 lbs) section load to 150 kg (330 lbs) /m	higher on request

SRF-P 2012 AC

Accumulating roller chain conveyor with head drive standard

B20.12.007



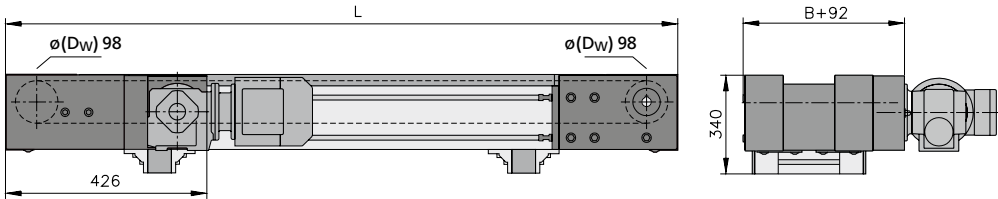
The sprocket ensures outstanding transmission of the motor power.

	Dimensions – technical information	Notes
Conveyor length L	between 1000-10000 mm	any increment possible depending on chain pitch
Conveyor width B	200 to 2000 mm	
Chain	accumulating roller chain 3/4" with plastic or steel roller	see from page 202
Drive location	discharge side left/right below	
Drive and speed	to 30 m/min (100 ft/min)	see chart on page 12
Stands and side rails		see from page 262
Load capacity	total load to 1000 kg (2200 lbs) section load to 150 kg (330 lbs) /m	higher on request

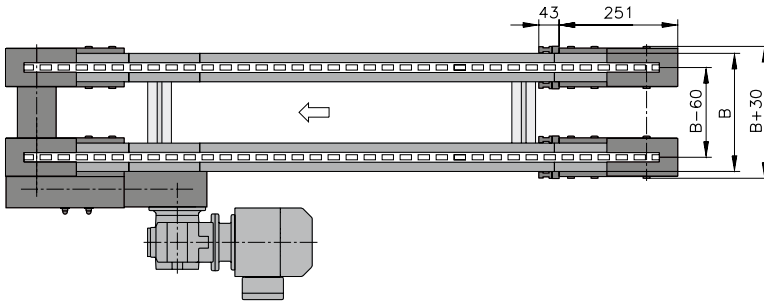
SRF-P 2012 AS

Accumulating roller chain conveyor with outside head drive

B20.12.009



Wear strip options see page 199



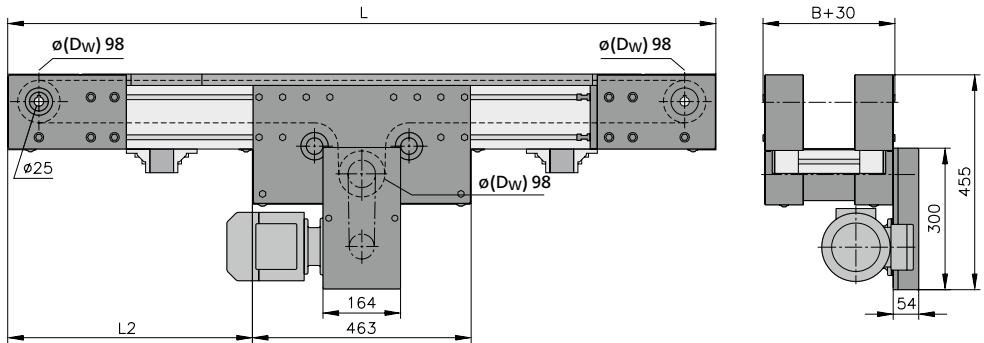
The overall height of the drive assembly is held to an absolute minimum.

	Dimensions – technical information	Notes
Conveyor length L	between 1000-10000 mm	any increment possible depending on chain pitch
Conveyor width B	200 to 2000 mm	
Chain	accumulating roller chain 3/4" with plastic or steel roller	see from page 202
Drive location	discharge side left/right	
Drive and speed	to 30 m/min (100 ft/min)	see chart on page 12
Stands and side rails		see from page 262
Load capacity	total load to 1000 kg (2200 lbs) section load to 150 kg (330 lbs) /m	higher on request

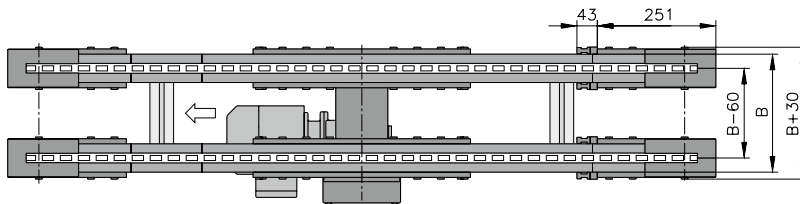
SRF-P 2012 BC

Accumulating roller chain conveyor with center drive standard

B20.12.010



Wear strip options see page 199



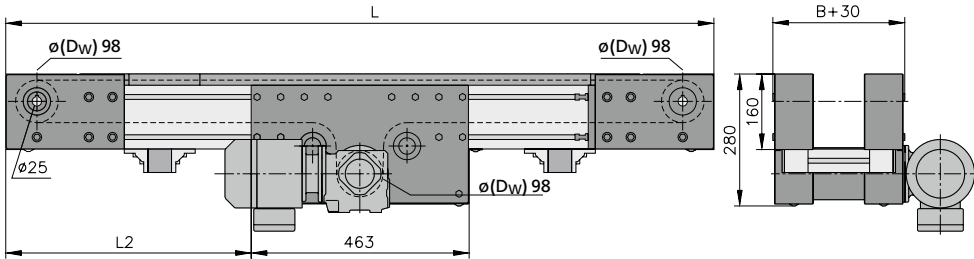
The compact design, and the ability to move the drive location anywhere along the conveyor frame, simplifies the integration of this conveyor into new or existing equipment.

	Dimensions – technical information	Notes
Conveyor length L	between 1000-10000 mm	any increment possible depending on chain pitch
Conveyor width B	200 to 2000 mm	
Chain	accumulating roller chain 3/4" with plastic or steel roller	see from page 202
Drive location	left/right below	
Drive and speed	to 30 m/min (100 ft/min)	see chart on page 12
Stands and side rails		see from page 262
Load capacity	total load to 1000 kg (2200 lbs) section load to 150 kg (330 lbs) /m	higher on request

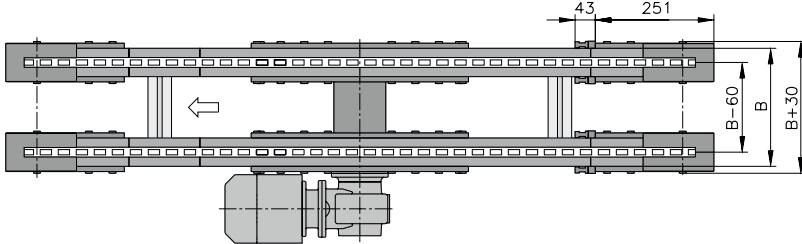
SRF-P 2012 BF

Accumulating roller chain conveyor with center drive, direct

B20.12.011



Wear strip options see page 199

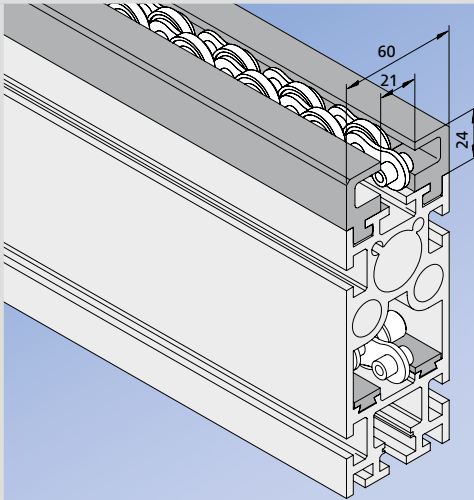


By placing the motor directly onto the drive shaft, this drive version minimizes not only the space required at the drive yet also the number of moving parts and maintenance requirements. The compact design, and the ability to move the drive location anywhere along the conveyor frame, simplifies the integration of this conveyor into new or existing equipment.

	Dimensions – technical information	Notes
Conveyor length L	between 1000-10000 mm	any increment possible depending on chain pitch
Conveyor width B	200 to 2000 mm	
Chain	accumulating roller chain 3/4" with plastic or steel roller	see from page 202
Drive location	discharge side left/right	
Drive and speed	to 30 m/min (100 ft/min)	see chart on page 12
Stands and side rails		see from page 262
Load capacity	total load to 1000 kg (2200 lbs) section load to 150 kg (330 lbs) /m	higher on request

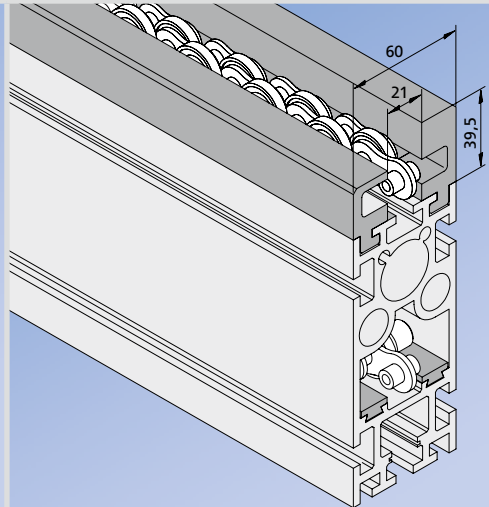
mk Guide- and wear strips feature low friction and high wear resistance.
The wear strips are made of PE-UHMW (PE-1000). Temperature max. 65° C (149° F).

Option A



Wear strips above mk 1089, 22.89.2000
Wear strip below mk 1022, 22.22.2000

Option B



Wear strip above right mk 1050, 22.50.2000
Wear strip above left mk 1089, 22.89.2000
Wear strip below mk 1022, 22.22.2000