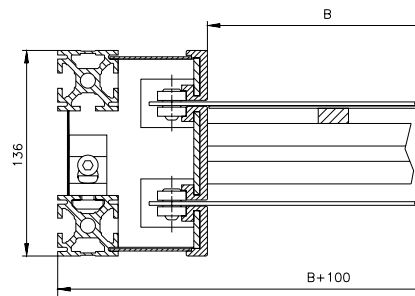


Curved Belt Conveyors KGF-P 2040



Conveyor frame cross-section





The conveyor system KGF-P 2040 is based on our Profile Series 40, and is compatible with all other mk conveyor systems. The exterior profile frame features 10 mm T-slots which allow for the direct mounting of additional accessories such as side rails, sensors, etc. The structural profiles used

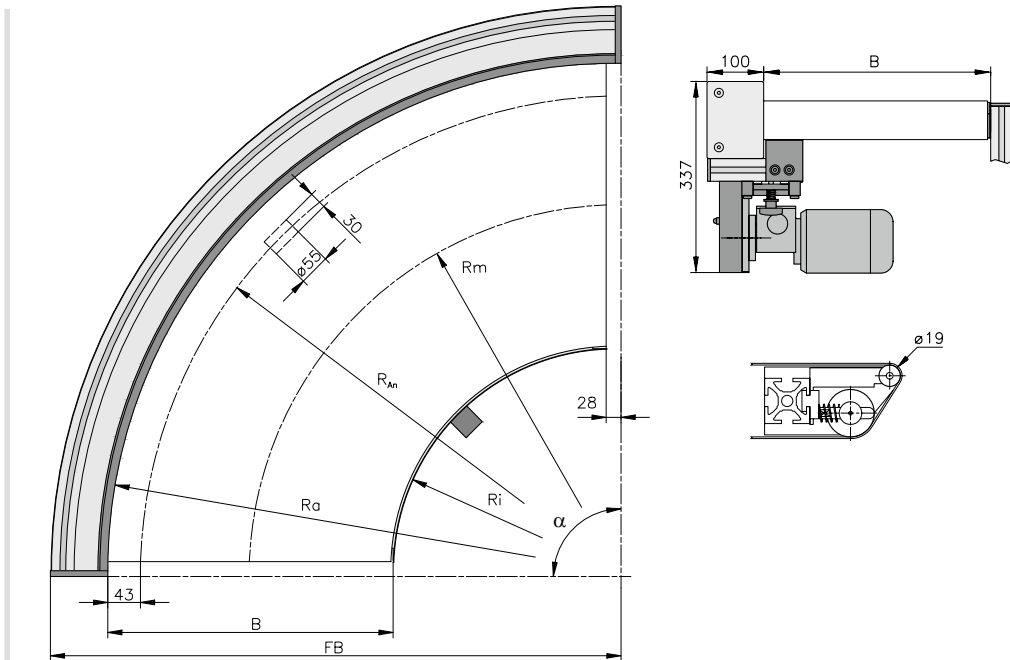
ensure rigid construction with excellent load bearing capacities, whereby the indicated values for maximum loads and speeds are directly dependent, and thus vary. The conveyor features a $\varnothing 20$ mm rolling nosebar which allows for the transfer of small parts. Automatic belt tensioning

is built into the tails which compensates for normal belt stretch, while at the same time ensuring a fixed, unchanging installed dimension. The compact center drive features no external protrusions when using our standard motor.

KGF-P 2040 BC

Curved belt conveyor center drive standard

B20.40.020 for 90° curve, B20.40.021 for 180° curve

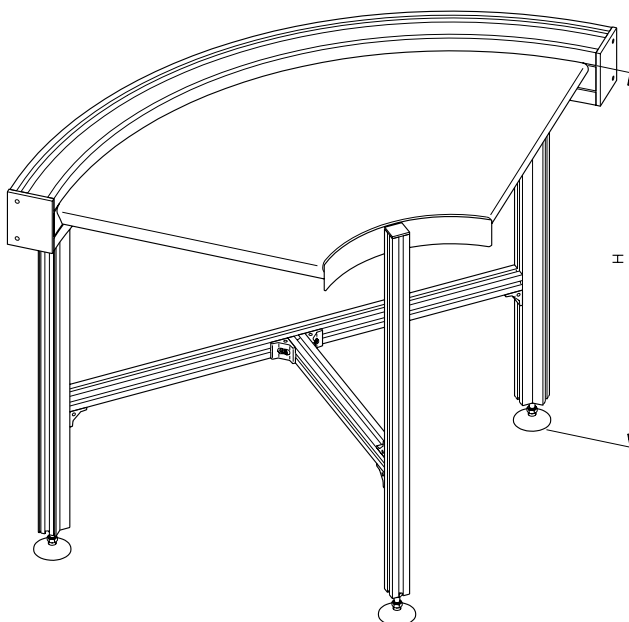


For this conveyor mk offers drive version BC, featuring usable belt widths of 300, 400, 500 and 600 mm for the conveyor radii 90° and 180°. The compact construction simplifies the integration of the conveyor within existing lines. The $\varnothing 55$ mm drive roll ensures good grip and efficient motor power transfer.

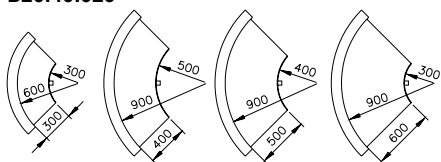
	Dimensions – technical information	Notes
Conveyor angle α	90° and 180°	others on request
Usable widths B	300 at Ra=600 mm, Ri=300 mm, FB=706 400 at Ra=900 mm, Ri=500 mm, FB=1006 500 at Ra=900 mm, Ri=400 mm, FB=1006 600 at Ra=900 mm, Ri=300 mm, FB=1006	
Drive location	below	
Drive and speed	5 to 30 m/min (15-100 ft/min) in Rm	others on request
Stands	standard, or with belt change support	
Load capacity	to 30 kg (65 lbs), depending on radius, speed and product	
Belts		belts see from page 84

KGF-P 2040

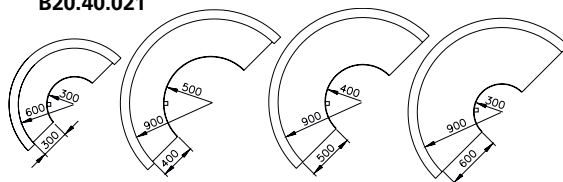
Stands and configurations



Radius Versions curve 90°
B20.40.020



Radius Versions curve 180°
B20.40.021



Order example

KGF-P 2040

Version Ra 900 / Ri 500

Speed 15 m/min

Usable Width B = 400 mm

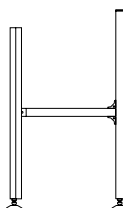
Belt type

Stands with (or without)
belt change support

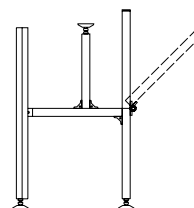
Height H = 800 mm

Type configuration

type 1
standard



type 2
with belt change support*



*from usable belt widths B = 400 mm